

Wheel Features

Tread Material:	PU	Core Material:	Cast Iron
Bearing:	Ball Bearing	Tread Hardness:	95A±3
Temperature:	-25°C~60°C	Running Speed:	4km/h

Note: Use beyond temperature range or beyond the recommended speed may shorten product life or even damage the product.




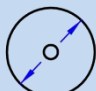
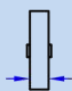

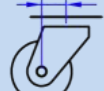

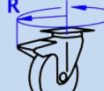
- ✔ 2 precision ball bearings,flexible rotation
- ✔ Polyurethane on casting iron core,high load capacity,wear resistance,oil resistance
- ✔ Environmental protection,quiet,effectively protect the floor
- ✔ With iron covers,thread-proof design
- ✔ Painted,anti-rust and anti-corrosion
- ⚠ High temperature and humidity may shortened service life

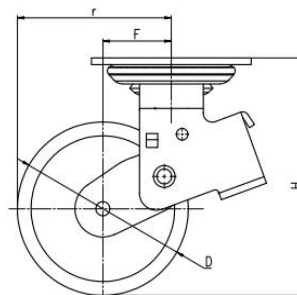
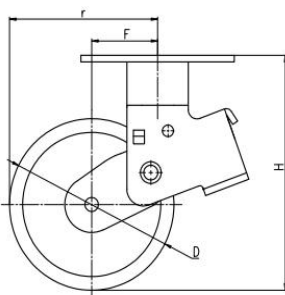


Rolling resistance	■ ■ ■ ■ □	Very good
Wear resistance	■ ■ ■ ■ ■	Excellent
Operating noise	■ ■ ■ ■ □	Very good
Floor surface preservation	■ ■ ■ ■ □	Very good

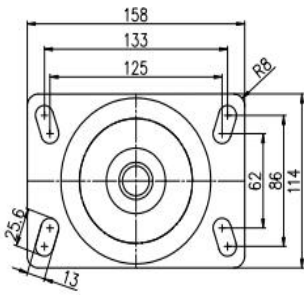
Bracket Features




- ✔ ON/OFF pedals,stable braking effect,easy to operate
- ✔ Steel plate pressed and fully welded,firm and strong
- ✔ Dustproof ring effectively protects grease for long sevice life
- ✔ Double springs plus cushion block design,large cushion range,outstanding shock absorption performance
- ✔ Powder spray treatment,superior anti-rust and anti-corrosion performance,salt spray test over 72 hours
- ⚠ Wheel brake only,without direction lock function

Parameter (mm)							
Wheel Size	Capacity	Wheel Dia.	Wheel Width	Total Height	Offset	Swivel Radius	Swivel Radius
5"	300 kg	125	48	195	60	122.5	185
6"	350 kg	150	48	207	60	135	193

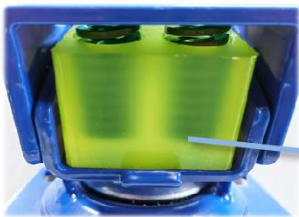


Mounting Drawing

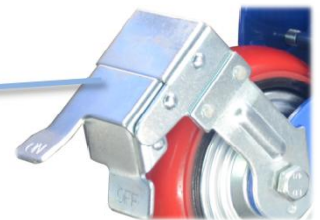


Product ID			
Product Images			
Wheel Size	Plate swivel	Plate fixed	Plate swivel brake
5"	45E01-1683	45E02-1683	45E03-1683
6"	45E04-1684	45E05-1684	45E06-1684

Product Details



ON/OFF brake is easy to operate.



Double spring and polyurethane block design, large retraction stroke, shock absorption performance is better, can effectively buffer and ensure balance and stability.

Double-welded, strong and robust. Dust ring can effectively protect the dust and grease lubrication.



Arc wheel surface can move easily. Iron cover is nice appearance and anti-winding.

[English]

