

Wheel Features

Tread Material:	PU	Core Material:	Cast Iron
Bearing:	Ball Bearing	Tread Hardness:	95A±3
Temperature:	-25°C~60°C	Running Speed:	4km/h

Note: Use beyond temperature range or beyond the recommended speed may shorten product life or even damage the product.



- ✔ 2 precision ball bearings,flexible rotation
- ✔ Polyurethane on casting iron core,high load capacity,wear resistance,oil resistance
- ✔ Environmental protection,quiet,effectively protect the floor
- ✔ Painted,anti-rust and anti-corrosion
- ✔ With metal covers,thread-proof design
- ⚠ High temperature and humidity may shortened service life

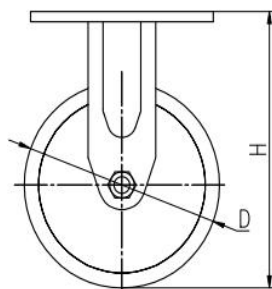
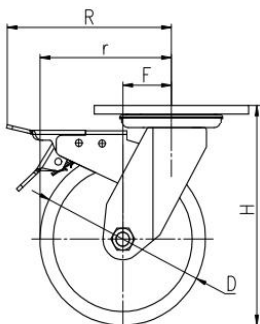


Rolling resistance	■ ■ ■ ■ □	Very good
Wear resistance	■ ■ ■ ■ ■	Excellent
Operating noise	■ ■ ■ ■ □	Very good
Floor surface preservation	■ ■ ■ ■ □	Very good

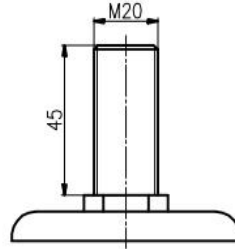
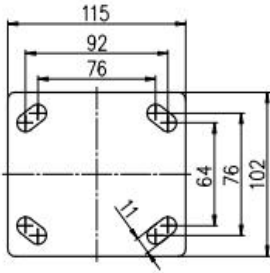
Bracket Features

- ✔ Steel plate pressed and fully welded,firm and strong
- ✔ Top plate and ball tracks are quenched to enhance strength and prolong service life
- ✔ Reinforced riveted,close gap,high structural strength
- ✔ Blue galvanized,ROHS/REACH passed,salt spray test over 72 hours
- ✔ ON/OFF pedals,stable braking effect,easy to operate
- ✔ Brake part is replaceable,convenient to maintain

Parameter (mm)							
Wheel Size	Capacity	Wheel Dia.	Wheel Width	Total Height	Offset	Swivel Radius	Swivel Radius
5"	350 kg	125	48	165	38	101	151
6"	410 kg	150	48	190	44	119	154
8"	430 kg	200	48	240	54	154	173



Mounting Drawing

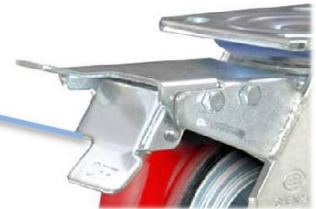


Product ID					
Product Images					
Wheel Size	Plate swivel	Plate fixed	Plate swivel brake	Threaded stem	Threaded stem brake
5"	35A63-1136	35A65-1136	35A64-1136	35A97-1136	35A94-1136
6"	35A66-1137	35A68-1137	35A67-1137	35A93-1137	35A98-1137
8"	35A69-1138	35A71-1138	35A70-1138	35A99-1138	35AA1-1138

Product Details

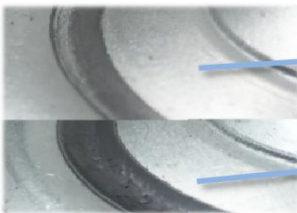


ON/OFF brake is easy to operate. Brake components can be replaced with screw connecting.



Grease nipple is convenient for maintenance. Dust ring can protect the grease and dustproof effectively.

Arc wheel surface, operation labor saving. Metal cover, nice appearance and anti-winding.



Quenched Ball Track has slight abrasion.

Non-quenched Ball Track's abrasion and gap clearly.

Comparison after 10000times Rotational test.

