

Wheel Features

Tread Material:	Nylon	Core Material:	Steel Core
Bearing:	Ball Bearing	Tread Hardness:	75D±3
Temperature:	-30°C~90°C	Running Speed:	4km/h

Note: Use beyond temperature range or beyond the recommended speed may shorten product life or even damage the product.




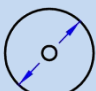
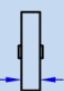

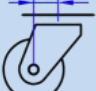
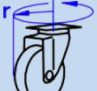

- ✔ 2 precision ball bearings, flexible rotation
- ✔ Casting nylon material, high load capacity, low starting force
- ✔ No deformation, anti-aging, durable to humid environment
- ⚠ Hard wheel material, it may damage epoxy flooring
- ⚠ Wheel running may cause some noise

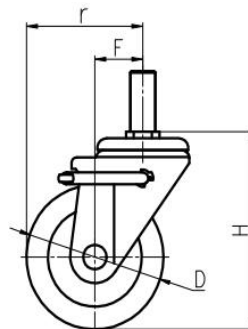
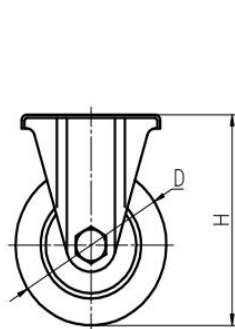
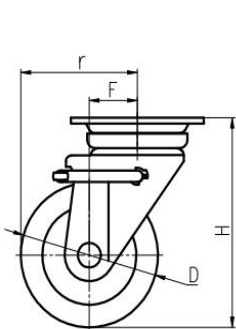


Rolling resistance	■ ■ ■ ■ ■	Excellent
Wear resistance	■ ■ ■ ■ ■	Excellent
Operating noise	■ ■ □ □ □	Acceptable
Floor surface preservation	■ ■ □ □ □	Acceptable

Bracket Features

- ✔ Side brake, easy to operate
- ✔ Bracket made of pressed steel plate, firm and strong
- ✔ Hollow riveted structure, effortless to rotate
- ✔ Environmentally friendly colour galvanized, salt spray test over 72 hours

Parameter (mm)	 Capacity	 Wheel Dia.	 Wheel Width	 Total Height	 Offset	 Swivel Radius	 Swivel Radius
3"	150 kg	75	32	100	23.5	61	61
4"	280 kg	100	32	144	35	85	85
5"	350 kg	130	35	172	38	103	103
6"	450 kg	150	38	197	40	115	115
8"	550 kg	200	42	250	58	158	158



[English]

Mounting Drawing

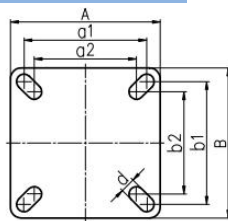


Plate Swivel/Brake

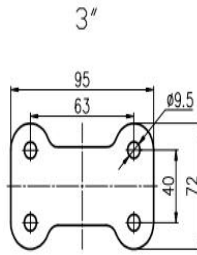
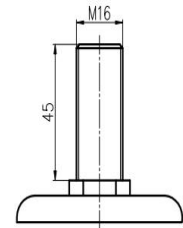
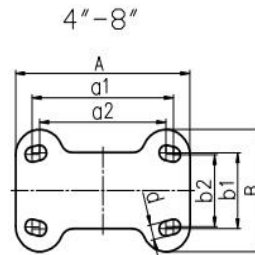


Plate Fixed



Threaded Stem

Wheel Size (inch)	Wheel Dia. (mm)	Plate Size (mm)	Hole Spacing a1×b1 (mm)	Hole Spacing a2×b2 (mm)	Hole Size (mm)
3"	75	38×33	64.8×64.8	59.2×59.2	9.5
4"	100	38×33	74×74	67×67	11
5"	130	46×39	90×90	75×75	11
6"	150	59×47	90×90	75×75	11
8"	200	70×58	115×115	100×100	12

Wheel Size (inch)	Wheel Dia. (mm)	Plate Size (mm)	Hole Spacing a1×b1 (mm)	Hole Spacing a2×b2 (mm)	Hole Size (mm)
4"	100	120×82	90×50	80×45	11
5"	130	138×90	112×56	100×53	11
6"	150	138×90	112×56	100×53	11
8"	200	152×103	119×63	112×56	12

Product ID

Product Images



Wheel Size

Plate swivel

Plate fixed

Plate fixed brake

Plate swivel brake

Plate side brake

Threaded stem

Threaded stem brake

3"

25A01-1057

25A03-1057

25A04-1057

25A02-1057

-

-

-

4"

25A10-1676

25A12-1676

25A13-1676

25A11-1676

25A72-1676

25A14-1676

25A15-1676

5"

25A19-1677

25A21-1677

25A22-1677

25A30-1677

25A73-1677

25A23-1677

25A24-1677

6"

25A28-1678

25A30-1678

25A31-1678

25A29-1678

25A74-1678

25A32-1678

25A33-1678

8"

25A37-1679

25A39-1679

25A40-1679

25A38-1679

-

-

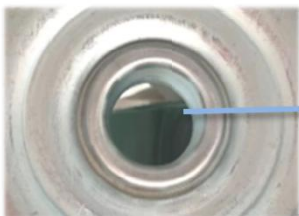
-

Product Details

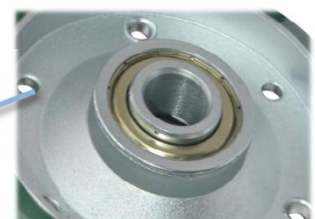
The side brake is easy and convenient operate, also large operational space.



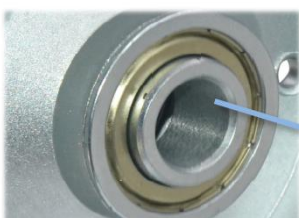
It's Japanese standard. The Kingpinless design is rotated easily and flexibly.



The wheel's working is smooth and light.



The closed double ball bearing is flexible rotation.



[English]

